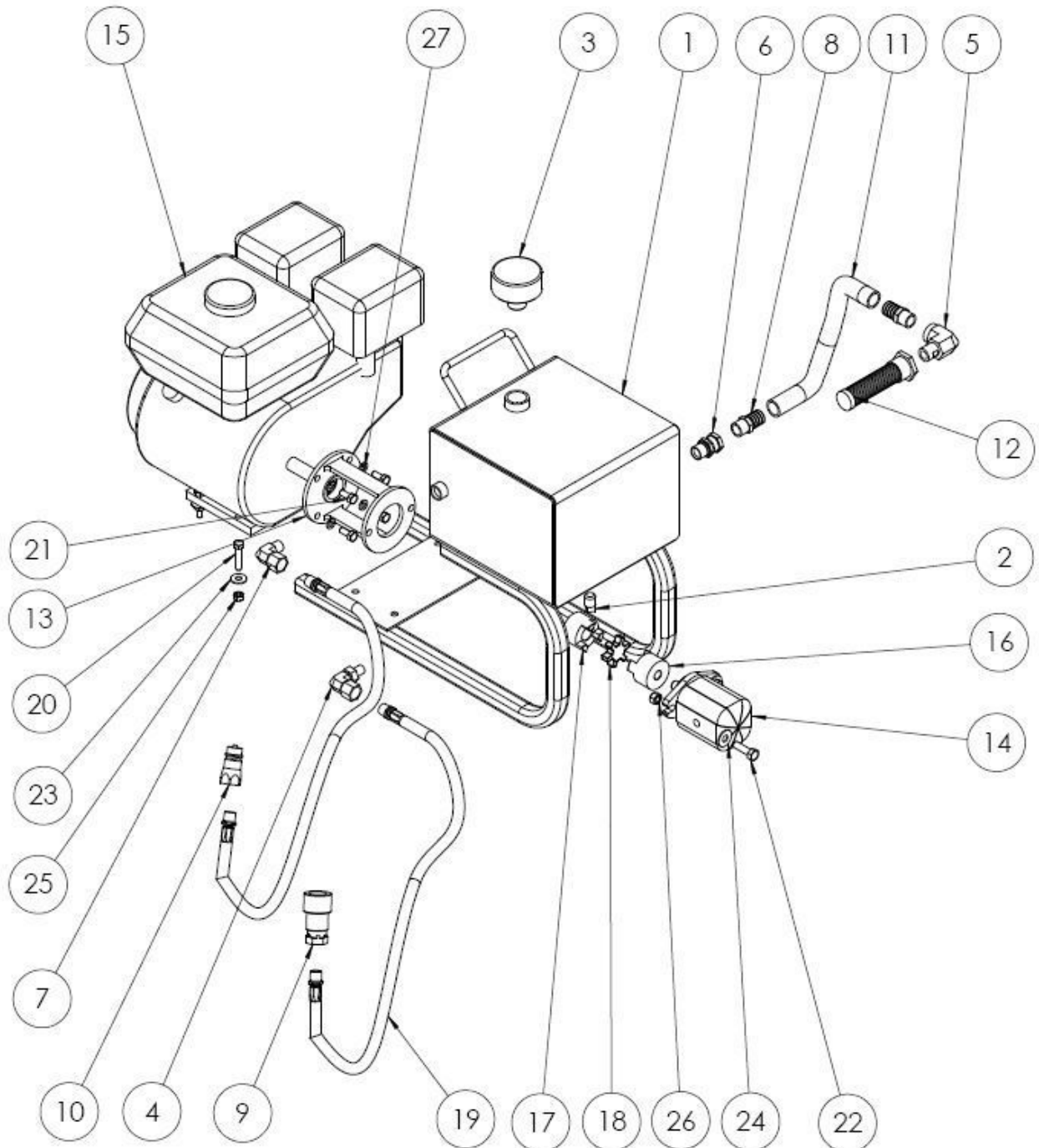


UNITÉ HYDRAULIQUE – HYDRAULIC UNIT
5.5 HP MPR



No	QTÉ	No. PIÈCE	DESCRIPTION
1	1	201 068	RÉSERVOIR HYDRAULIQUE 8L HYDRAULIC TANK
2	1	100 198	BOUCHON 3/8 PLUG
3	1	100 633	BOUCHON - CAP
4	1	100 287	COUDE 90° - 3/8" F X 9/16 M ORB - SWIVEL ELBOW 90°
5	1	100 370	COUDE 90° 1/2 X 1/2 MF - ELBOW 90°
6	1	100 255	ADAPTEUR DROIT 3/4 M ORB X 1/2 F SWIVEL STRAIGHT ADAPTOR
7	1	100 280	COUDE 90° - 3/8" X 3/8" FM -ELBOW 90°
8	2	100 336	EMBOUT À BARBILLONS 1/2 M X 3/4 BARBS FITTING
9	1	100 232	ACCOUPLLEMENT 1/2" F COUPLING
10	1	100 233	ACCOUPLLEMENT 1/2" M COUPLING
11	1	100 402	BOYAU ENTRÉE POMPE - ENTRY PUMP HOSE
12	1	100 643	CRÉPINE 5 GPM OIL STRAINER
13	1	100 529	SUPPORT DE POMPE 5.5 HP PUMP SUPPORT
14	1	100 757	POMPE 2 GPM PUMP
15	1	101 267	MOTEUR 5.5 HP MOTOR
16	1	100 520	ACCOUPLLEMENT 1/2" SHAFT COUPLING
17	1	100 521	ACCOUPLLEMENT 3/4" SHAFT COUPLING
18	1	100 522	JOINT FLEXIBLE JOINT
19	2	200 827	BOYAU ENTRÉE-SORTIE 3/8" X 60' IN-OUT HOSE
20	4	150 013	BOULON PLAQ. 5/16-18 X 1-1/2" PLATED BOLT
21	4	150 205	BOULON PLAQ. 3/8 X 1 X 20" PLATED BOLT
22	2	105 023	BOULON PLAQ. 3/8-16 X 1-1/4" PLATED BOLT
23	4	150 208	RONDELLE PLAQ. 5/16" PLATED WASHER
24	2	150 211	RONDELLE PLAQ. 3/8" PLATED WASHER
25	4	150 172	ÉCROU PLAQ. NYLON 5/16-18 PLATED NYLON NUT
26	2	150 173	ÉCROU PLAQ. NYLON 3/8-16 PLATED NYLON NUT
27	4	150 225	RONDELLE RESSORT 5/16 LOCK WASHER